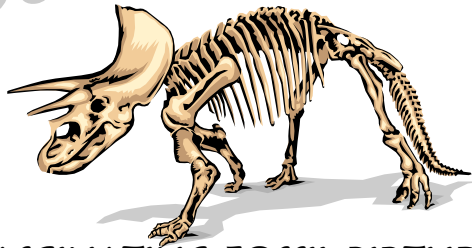


# You're Invited...



...TO A FASCINATING FOSSIL BIRTHDAY PARTY CELEBRATION!

It's a birthday party in the University of Nebraska State Museum at Morrill Hall for \_\_\_\_\_, and you are invited!

Date: \_\_\_\_\_

Time: \_\_\_\_\_

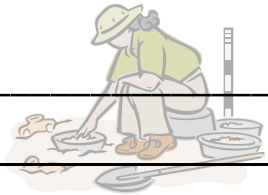
Duration: **1½ hours**

R.S.V.P. \_\_\_\_\_

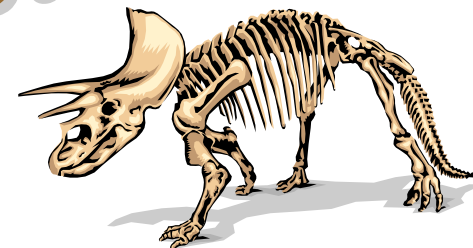
**Location:** Morrill Hall is located just south of 14<sup>th</sup> & Vine Street. Look for the bronze mammoth!

**Museum drop-off/pick-up instructions:** Park in front of the museum in a visitor parking space (you'll need your license plate number at the front desk). Museum front desk staff will direct you to the party room where children will be checked in. Parents and non-attending children may then either leave the museum and return for pick-up, or tour Morrill Hall free of charge until the party ends. Check in up to 15 minutes early.

**For maps & more information, visit:**  
[www.museum.unl.edu/birthdays/partyinfo.html](http://www.museum.unl.edu/birthdays/partyinfo.html)



# You're Invited...



...TO A FASCINATING FOSSIL BIRTHDAY PARTY CELEBRATION!

It's a birthday party in the University of Nebraska State Museum at Morrill Hall for \_\_\_\_\_, and you are invited!

Date: \_\_\_\_\_

Time: \_\_\_\_\_

Duration: **1½ hours**

R.S.V.P. \_\_\_\_\_

**Location:** Morrill Hall is located just south of 14<sup>th</sup> & Vine Street. Look for the bronze mammoth!

**Museum drop-off/pick-up instructions:** Park in front of the museum in a visitor parking space (you'll need your license plate number at the front desk). Museum front desk staff will direct you to the party room where children will be checked in. Parents and non-attending children may then either leave the museum and return for pick-up, or tour Morrill Hall free of charge until the party ends. Check in up to 15 minutes early.

**For maps & more information, visit:**  
[www.museum.unl.edu/birthdays/partyinfo.html](http://www.museum.unl.edu/birthdays/partyinfo.html)

