

You're Invited...



...TO A CREEPY CRAWLY BIRTHDAY PARTY CELEBRATION!

It's a birthday party in the University of Nebraska State Museum at Morrill Hall for _____, and you are invited!

Date: _____

Time: _____

Duration: **1½ hours**

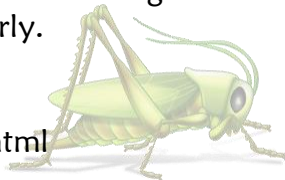
R.S.V.P. _____

Location: Morrill Hall is located just south of 14th & Vine Street. Look for the bronze mammoth!

Museum drop-off/pick-up instructions: Park in front of the museum in a visitor parking space (you'll need your license plate number at the front desk). Museum front desk staff will direct you to the party room where children will be checked in. Parents and non-attending children may then either leave the museum and return for pick-up, or tour Morrill Hall free of charge until the party ends. Check in up to 15 minutes early.

For maps & more information, visit:

www.museum.unl.edu/birthdays/partyinfo.html



You're Invited...



...TO A CREEPY CRAWLY BIRTHDAY PARTY CELEBRATION!

It's a birthday party in the University of Nebraska State Museum at Morrill Hall for _____, and you are invited!

Date: _____

Time: _____

Duration: **1½ hours**

R.S.V.P. _____

Location: Morrill Hall is located just south of 14th & Vine Street. Look for the bronze mammoth!

Museum drop-off/pick-up instructions: Park in front of the museum in a visitor parking space (you'll need your license plate number at the front desk). Museum front desk staff will direct you to the party room where children will be checked in. Parents and non-attending children may then either leave the museum and return for pick-up, or tour Morrill Hall free of charge until the party ends. Check in up to 15 minutes early.

For maps & more information, visit:

www.museum.unl.edu/birthdays/partyinfo.html

